
Team Members

Web Part







Sharepoint 2010 Version

© AMREIN ENGINEERING AG

Version 1.0

August 2011

AE Team Members

 <p>Newman Tom Juerg holds a master in Physics and is the head of our development team. He worked with Sharepoint from day one and also is a moderately skilled programmer.</p> <p>My Site..</p>	 <p>Mayer Peter Curabitur enim lacus, aliquam sed vulputate at, viverra nec elit. Maecenas et porttitor nulla. Phasellus mattis massa at arcu tempus volutpat.</p> <p>My Site..</p>
 <p>Miller Paula</p> <p>My Site..</p>	 <p>Nietlispach Jürg I am a student at the University of Berne. I also play the double bass.</p> <p>My Site..</p>
 <p>O'Shea Gary He is also a dedicated bassist and supports Jazz combos all around the country, so there's a good chance to meet him on the bandstand in a jazz club after hours.</p> <p>My Site..</p>	 <p>Übelmann Simon I am a technical assistant in our IT department. I fix holes in my spare time and also play the tuba in our local brass band. My favourite food is chocolate.</p> <p>My Site..</p>

Description

The Team Members Directory Web Part reads the user entries from the Sharepoint User Profile Store and displays the selected user fields in a grid.

The Web Part requires Windows Sharepoint Server 2010

The following parameters can be configured:

- Sharepoint Site
- User Properties to be displayed
- Filtering, Grouping, Searching, Paging and Sorting of rows
- Number of Grid Columns
- optional Header text

Prerequisites

Before you attempt to install the solutions you need to make sure that you have the following installed on your server(s):

- Microsoft SharePoint Server 2010

Installation

Manual Installation

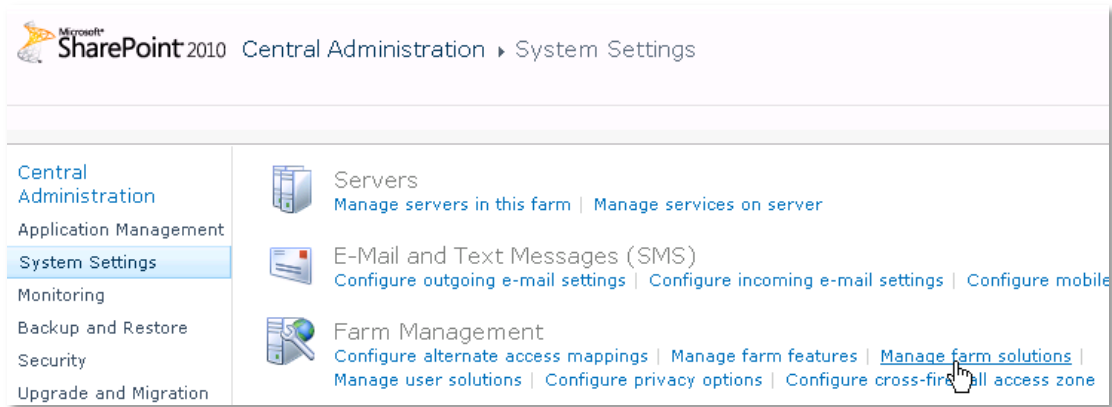
1. download and unpack the **AEXTeamMembersWebpart.zip** file.
The ZIP archive contains the AEXTeamMembersWebpart.dll and the AEXTeamMembers.webpart files.
2. drop the AEXTeamMembersWebpart.dll into the GAC of your Sharepoint server (c:\windows\assembly).
3. add the following line to the "<SafeControls>" section of your Web.Config file.
Please make sure that the line is added as one single line (no line breaks):

```
<SafeControl Assembly="AEXTeamMembersWebpart, Version=1.0.0.0, Culture=neutral,
PublicKeyToken=ced1cd9a6bd2f524" Namespace="AEXTeamMembersWebpart" TypeName="*" Safe="True"
SafeAgainstScript="False" />
```

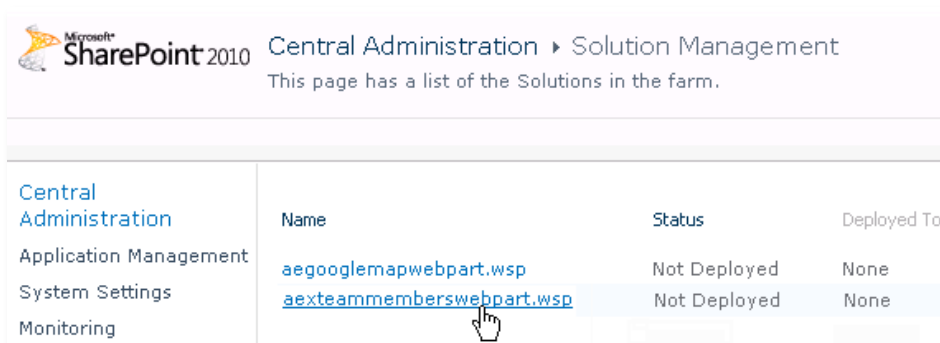
4. from the top site go to "Site Actions/Site Settings/Modify All Site Settings/Galleries/Web Parts"
5. use the "Upload" menu option to upload the AEXTeamMembers.webpart file.

Automatic Installation

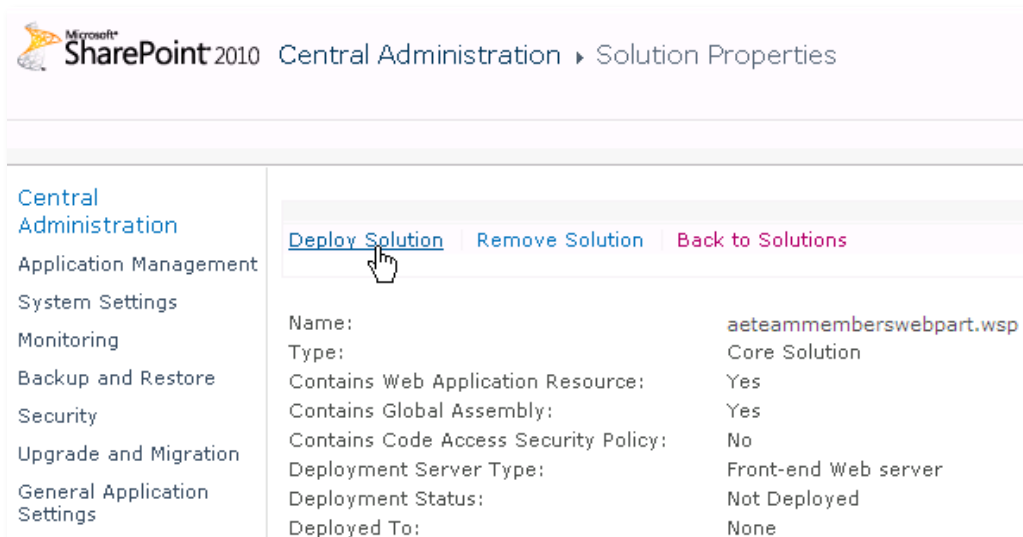
1. Unpack the **AEXTeamMembersWebpart.wsp** and **Install.bat** files from the Zip Archive and place the 2 files onto your Sharepoint Server.
2. Add the Solution by either running **Install.bat** or manually entering:
`stsadm -o addsolution -filename AEXTeamMemberswebpart.wsp`
3. Deploy the solution by navigating with your browser to "Central Administration > System Settings > Farm Management > Manage farm solutions":



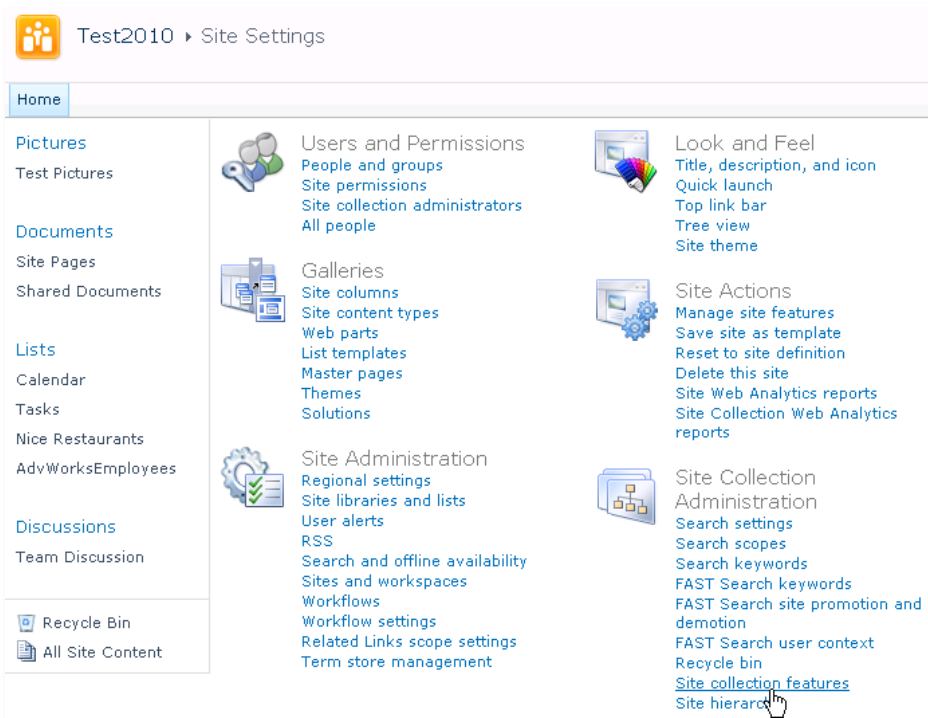
4. You should now see the **AEXTeamMembersWebpart.wsp** in the farm's solution store:



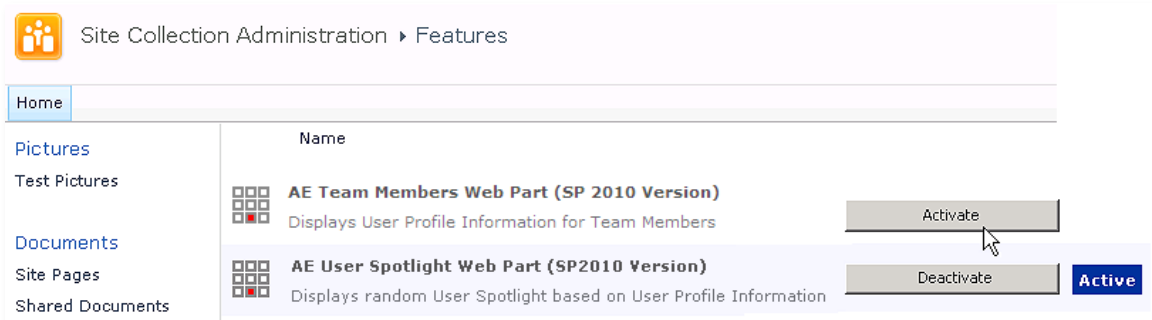
Click on "AEXTeamMembersWebpart.wsp" to deploy the solution:



5. Proceed to activate the feature by navigating to the "Site Actions/Site Settings" page in your top-level site:



Choose "Site collection features" to navigate to the Site Collection Features page:

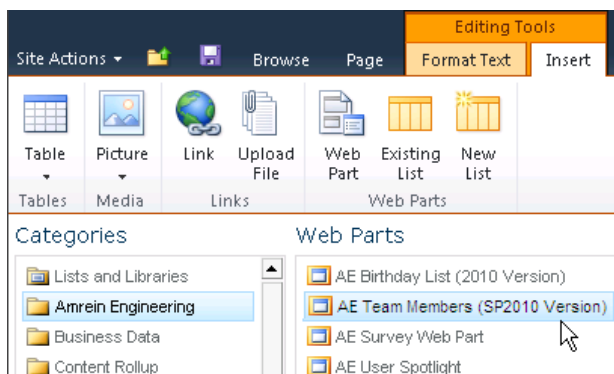


Activate the "AE Team Members Web Part" feature

Adding the Web Part to a Page

Navigate to a page where you would like to place the web part and choose "Site Actions/Edit Page"

- Add the web part to the appropriate zone. The web part is listed in the "Amrein Engineering" gallery section :



Security Note:

if you get the following error message: "**Only an administrator may enumerate through all user profiles**", you will need to grant the application pool account(s) for the web application(s) „Manage User Profiles” permissions within the SSP. This ensures that the application pool is able to retrieve the list of user profiles.

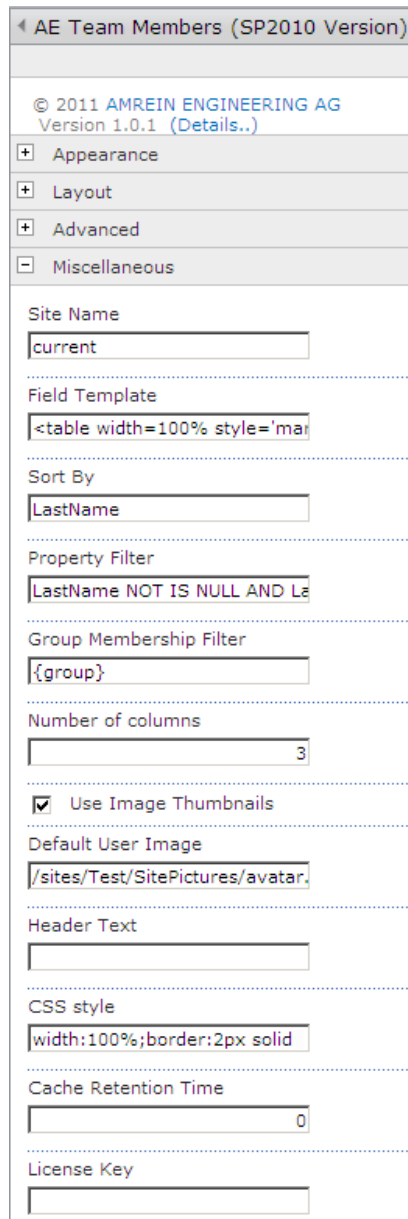
To assign this permission, access your active Shared Services Provider via Central Admin.

From the „User Profiles and My Sites” group, click “**Personalization services permissions**”.

Add the „**Manage User Profiles**” permission to your application pool account(s).

Web Part Configuration

Configure the following Web Part properties in the Web Part Editor "Miscellaneous" pane section as needed:



AE Team Members (SP2010 Version)

© 2011 AMREIN ENGINEERING AG
Version 1.0.1 (Details..)

Appearance

Layout

Advanced

Miscellaneous

Site Name
current

Field Template
<table width=100% style='mar

Sort By
LastName

Property Filter
LastName NOT IS NULL AND La

Group Membership Filter
{group}

Number of columns
3

Use Image Thumbnails

Default User Image
/sites/Test/SitePictures/avatar.

Header Text

CSS style
width:100%;border:2px solid

Cache Retention Time
0

License Key

- **Site Name:**
 - Enter the name of the site that contains the User Profile Store:
 - leave this field empty if the User Profile is in the default SSP
 - Enter "**current**" if the User Profile is in the current site
 - Enter the Site name to choose a specific SSP
- **Field Template:** enter the desired User Profile properties (surrounded by curly braces). You can specify HTML tags and CSS styles to freely format the text

Example:

```
{PictureURL}
<b>{FirstName} {LastName}</b>
<p style='margin-top:3px;margin-bottom:3px'><font color=gray>{Department}</font></p>
{AboutMe}
<div style='background-color:#ffcc00;padding:5px;margin-top:4px'>
<b>Office Phone:</b> {WorkPhone}<br>
<b>Cell Phone:</b> {CellPhone}
<p style='text-align:right;margin:0px'><a href='{PersonalSpace}'>Visit My Site..</a></p>
</div>
```

The following standard Sharepoint User Profile properties are available:

- AccountName
- FirstName
- LastName
- PreferredName
- WorkPhone
- Office
- Department
- Title
- Manager
- AboutMe
- Presence
- PictureURL
- UserName
- QuickLinks
- webSite
- WorkEmail
- Assistant
- CellPhone
- Fax
- HomePhone
- PersonalSpace
- SPS-Dotted-line
- SPS-Peers
- SPS-Responsibility
- SPS-Skills
- SPS-PastProjects
- SPS-Interests
- SPS-School
- SPS-SipAddress
- SPS-Birthday
- SPS-MySiteUpgrade
- SPS-HireDate

- **Sort By:**
enter the User property to define the default sort order. You can add multiple properties separated by commas.

Examples:

Department
Department,LastName

- **Property Filter:**
enter an optional Filter condition to apply a filter. Combine multiple conditions with **AND** and **OR**. You can choose from the following filter operators:

Operator	Description
AND	Combines more than one clause. Records must match all criteria to be displayed.
OR	Combines more than one clause. Records must match at least one of the filter expressions
NOT	Reverses an expression. Can be used in conjunction with any other clause.
< > <= and >=	Performs comparison of values. These comparisons can be numeric or alphabetic.
BETWEEN	Specifies an inclusive range. Example: Units BETWEEN 5 AND 15
<> . =	Performs equality testing.
IS NULL	Tests the Property for a null value.
IN (a, b, c)	A short form for using an OR clause with the same field.
LIKE	Performs pattern matching with string data types.
+	Adds two numeric values, or concatenates a string.
-	Subtracts one numeric value from another.
*	Multiplies two numeric values.
/	Divides one numeric value by another.
%	Finds the modulus (the remainder after one number is divided by another).

Examples:

Department='IT'
Department<> 'Sales'
Department IN ('Sales', 'Development', 'IT')
LastName NOT IS NULL AND Department='Sales'

- **Group Membership Filter:**
enter an optional Sharepoint Group to only display the members of this group
- **Number of Columns:**
enter the number of Grid columns
- **Use Image Thumbnails:**
use the user image thumbnails as generated by Sharepoints. Uncheck this option if your user profile images have not been uploaded via Sharepoint.
- **Header Text:**
enter an optional header text. Please note that you can embed HTML tags if needed.

- **CSS Style:**
enter the desired CSS style for the surrounding container.
- **Cache Retention Time:**
enter the data cache retention time in minutes (enter "0" to turn off the cache feature) to speed up consecutive page visits. The use of this feature is recommended for large User Profile stores. Enter the optional color of the alternating row background (leave blank to use default).
- **License Key:**
enter your Product License Key (as supplied after purchase of the "Team Members Web Part" license key). Leave this field empty if you are using the free 30 day evaluation version or if you choose one of the License Activation described below.

License Activation

You have the following 3 options to enter your License Key:

1. Enter the License Key into the corresponding "License Key" field in the web part configuration pane (See Description above).

2. WSP Solution Deployment:

Add the **License.txt** file (as supplied by AMREIN ENGINEERING after having purchased a license) to the Solution at the following location:

```
c:\Program Files\Common Files\Microsoft Shared\Web Server  
Extensions\14\template\features\AEXTeamMembersWebpart
```

3. Manual Deployment:

Add the License Key to your web.config (typically found at c:\inetpub\wwwroot\wss\virtualdirectories\80) **<appSettings>** section as follows:

```
<appSettings>  
<add key="AETM" value="AETM-x-xxxxx-xxxxx-xx-xx" />  
</appSettings>
```

Replace the "x" characters with your actual key values.

Please note that this method requires you to manually add the key to each Sharepoint application.