

---

# List Items

# Web Part

Sharepoint 2010 Installation Instructions

© AMREIN ENGINEERING AG


Version 1.0

May 2012

## [AE List Items Web Part](#)

### **SP Online Training Manual**

This is our official Sharepoint Online User Training Manual which contains a detailed description on how to use the Sharepoint Online Company Portal.

 [open Document](#)


### **Employee List Screen shot**

This is the description for the Employee List Screen shot This is the last line

 [open Document](#)

### **AE Web Part License PDF**

This document contains the AE Web Part License terms.

 [open Document](#)

---

## Description

The List Items Web Part sequentially displays the List items contained in the specified Sharepoint List. The Web Part can be used with Windows Sharepoint Services V3, MOSS.2007 and Sharepoint 2010

The following parameters can be configured:

- Sharepoint List to be displayed
- ListView to be able to select/filter a subset of items in a List

## Prerequisites

Before you attempt to install the solutions you need to make sure that you have the following installed on your server(s):

- Microsoft Office SharePoint Server 2007, WSS 3.0 or Sharepoint 2010

## Installation

### Manual Installation

1. download and unpack the **AEListItemsWebpart.zip** file.  
The ZIP archive contains the ListItemsWebpart.dll and the AEListItems.webpart files.
2. drop the **AEListItemsWebpart.dll** either into the SPS web application bin directory or into the GAC of your Sharepoint server (c:\windows\assembly).
3. add the following line to the "<SafeControls>" section of your Web.Config file.  
Please make sure that the line is added as one single line (no line breaks):

```
<SafeControl Assembly="AEListItemsWebpart, Version=1.0.0.0, Culture=neutral,
PublicKeyToken=b074b5a50ee0114b" Namespace="AEListItemsWebpart" TypeName="*" Safe="True" />
```

4. from the top site go to "Site Actions/Site Settings/Modify All Site Settings/Galleries/Web Parts"
5. use the "Upload" menu option to upload the AEListItems.webpart file.

### Automatic Installation

1. Unpack the **AEListItemsWebpart.wsp** and **Install.bat** files from the Zip Archive and place the 2 files onto your Sharepoint Server.
2. Add the Solution by either running **Install.bat** (for Sharepoint 2007) or **install2010.bat** for Sharepoint 2010 by manually entering:

```
stsadm -o addsolution -filename AEListItemswebpart.wsp
```

3. Deploy the solution by navigating with your browser to "Central Administration > System Settings > Farm Management > Manage farm solutions":

Microsoft SharePoint 2010 Central Administration ▶ System Settings

- Central Administration
- Application Management
- System Settings**
- Monitoring
- Backup and Restore
- Security
- Upgrade and Migration

- Servers**  
Manage servers in this farm | Manage services on server
- E-Mail and Text Messages (SMS)**  
Configure outgoing e-mail settings | Configure incoming e-mail settings | Configure mobile
- Farm Management**  
Configure alternate access mappings | Manage farm features | **Manage farm solutions** | Manage user solutions | Configure privacy options | Configure cross-firewall access zone

4. You should now see the **AEListItemsWebpart.wsp** in the farm’s solution store:

Microsoft SharePoint 2010 Central Administration ▶ Solution Management  
This page has a list of the Solutions in the farm.

Name	Status	Deployed To
<a href="#">aegooglemapwebpart.wsp</a>	Not Deployed	None
<a href="#">aestaffdirectorywebpart.wsp</a>	Deployed	http://bto-web1-cd/
<a href="#">aelistitemswebpart.wsp</a>	Deployed	http://bto-web1-cd/
<a href="#">aelistrotatorwebpart.wsp</a>	Not Deployed	None

Click on “**AEListItemsWebpart.wsp**” to deploy the solution:

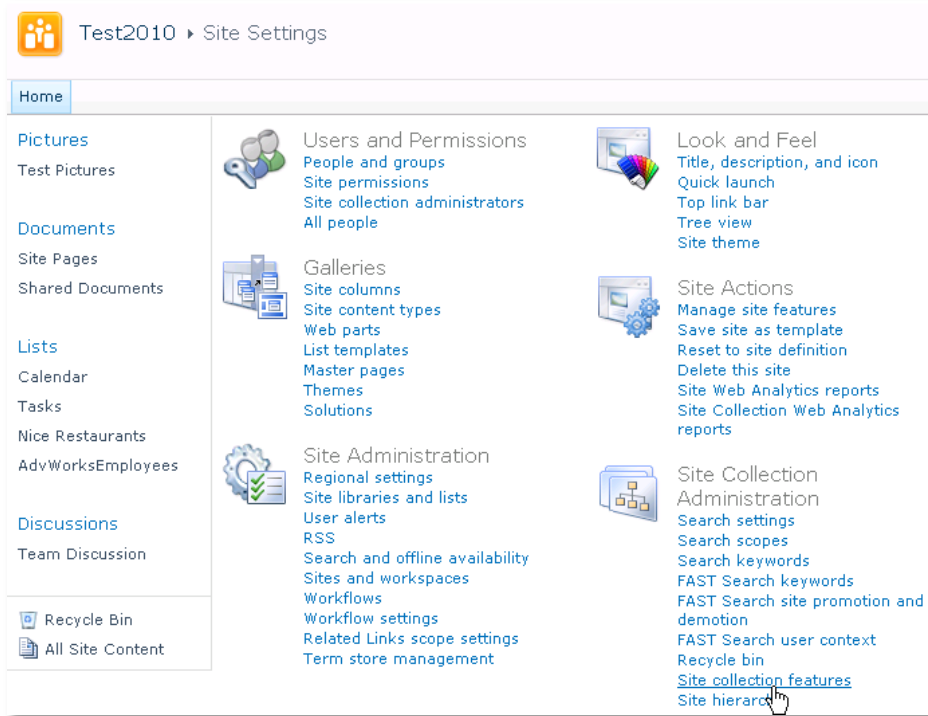
Microsoft SharePoint 2010 Central Administration ▶ Solution Properties

- Central Administration
- Application Management
- System Settings
- Monitoring
- Backup and Restore
- Security
- Upgrade and Migration
- General Application Settings

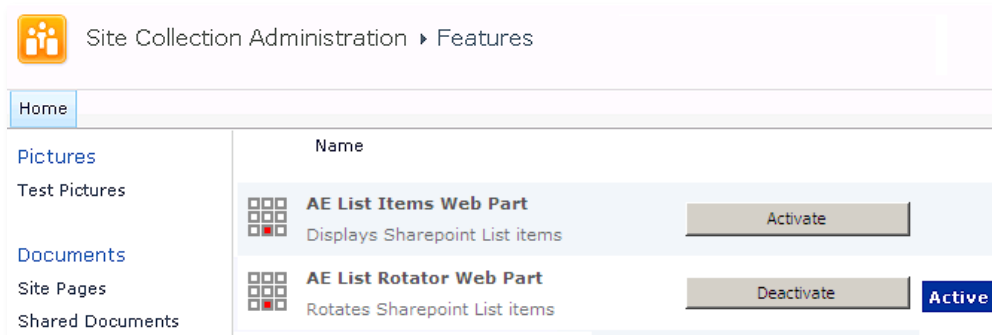
[Deploy Solution](#) | [Remove Solution](#) | [Back to Solutions](#)

Name:	aelistitemswebpart.wsp
Type:	Core Solution
Contains Web Application Resource:	Yes
Contains Global Assembly:	Yes
Contains Code Access Security Policy:	No
Deployment Server Type:	Front-end Web server
Deployment Status:	Not Deployed
Deployed To:	None

1. Proceed to activate the feature by navigating to the “Site Actions/Site Settings” page in your top-level site:



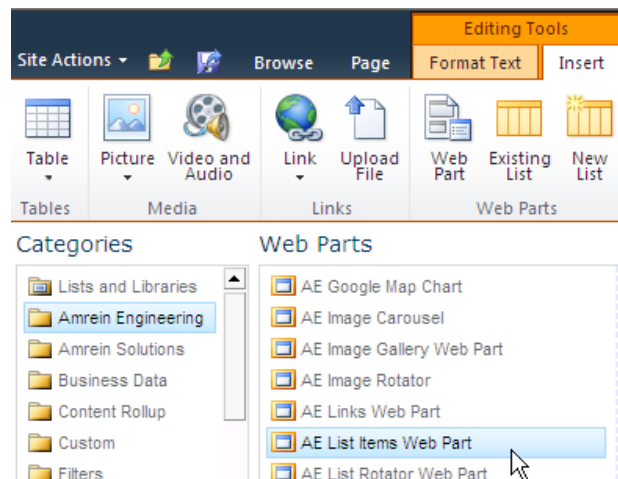
Choose “Site collection features” to navigate to the Site Collection Features page:



Activate the “AE List Items Web Part” feature

### Adding the Web Part to a Page

Navigate to a page where you would like to place the web part and choose "Site Actions/Edit Page"  
Add the web part to the appropriate zone. The web part is listed in the "Amrein Engineering" gallery section :



## Web Part Configuration

Configure the following Web Part properties in the Web Part Editor "Miscellaneous" pane section as needed:

AE List Items Web Part [1] x

^

© 2012 AMREIN ENGINEERING AG  
Version 1.0.0

- + Appearance
- + Layout
- + Advanced
- Miscellaneous

Site Name  
[ ]

List Name  
[ Shared Documents ]

View Name  
[ ]

Nbr. of feed items  
[ 5 ]

Header Text  
[ ]

Field Template  
[ <h3>{Title}</h3>{Description} ]

Footer Text  
[ ]

Open Links in new window

License Key  
[ ]

- **Site Name:**  
Enter the name of the site that contains the ListItems Picture Library:
  - leave this field empty if the Library is in the current site (eg. the Web Part is placed in the same site)
  - Enter a "/" character if the Library is contained in the top site
  - Enter a path if the Library is in a subsite of the current site (eg. in the form of "current site/subsite")
- **List Name:**  
enter the desired Sharepoint List, Document Library or Picture Library name.
- **View Name:**  
Optionally enter the desired List View of the list specified above. A List View allows you to specify specific data filtering and sorting. Please note that you need to select both the "Title" and "Body" columns when defining the view. Leave this field empty if you want to use the List default view.
- **Nbr. of Items:**  
enter the desired maximum number of List items to be displayed.
- **Header Text:**  
enter the desired optional Web Part Header text.

- 
- **Field Template:**  
enter the List columns to be displayed (surrounded by curly braces). You can specify HTML tags and CSS styles to freely format the text.  
  
Example:  
`<li>{Title} <i>{Created}</i></li>`
  - **Footer Text:**  
enter the desired optional Web Part Footer text.
  - **License Key:**  
enter your Product License Key (as supplied after purchase of the "List Items Web Part" license key). Leave this field empty if you are using the free 30 day evaluation version or if you choose one of the License Activation described below.

## License Activation

You have the following 3 options to enter your License Key:

1. Enter the License Key into the corresponding "License Key" field in the web part configuration pane (See description above).

**2. WSP Solution Deployment:**

Add the **License.txt** file (as supplied by AMREIN ENGINEERING after having purchased a license) to the Solution at the following location:

```
c:\Program Files\Common Files\Microsoft Shared\Web Server Extensions\14\template\features\AEListItemsWebpart
```

**3. Manual Deployment:**

Add the License Key to your web.config (typically found at c:\inetpub\wwwroot\wss\virtualdirectories\80) <appSettings> section as follows:

```
<appSettings>
.
.
  <add key="AELI" value="AELI-x-xxxxx-xxxxx-xx-xx" />
</appSettings>
```

Replace the "x" characters with your actual key values.

Please note that this method requires you to manually add the key to each Sharepoint application.