

AE Filter Web Part

© AMREIN ENGINEERING AG

Version 1.0

March 2013

AE Filter Web Part	
Status:	<input type="text" value="In Progress"/>
Due Date:	<input type="text" value="4/16/2013"/> 

Description

The AE Filter Web Part allows to interactively select a specific value from a text field, a dropdown box or a date picker and then will make the selected value available to other Web Parts via a Web Part connection. The AE Filter Web Part can be used with Windows Sharepoint Services V3, MOSS 2007, Sharepoint 2010 and Sharepoint 2013

The following parameters can be configured:

- Filter Type (Text, Date or Dropdown)
- Filter default value
- CSS style

Prerequisites

Before you attempt to install the solutions you need to make sure that you have the following installed on your server(s):

- Microsoft Office SharePoint Server 2007, WSS 3.0, Sharepoint 2010 or Sharepoint 2013

Installation

Manual Installation

1. download and unpack the **AEFilterWebpart.zip** file.
The ZIP archive contains the AEFILTERWebpart.dll and the AEFILTER.webpart files.
2. drop the **AEFilterWebpart.dll** either into the SPS web application bin directory or into the GAC of your Sharepoint server (c:\windows\assembly).
3. add the following line to the "<SafeControls>" section of your Web.Config file.
Please make sure that the line is added as one single line (no line breaks):

```
<SafeControl Assembly="AEFilterWebpart, Version=1.0.0.0, Culture=neutral,
PublicKeyToken=662919891e580903" Namespace="AEFilterWebpart" TypeName="*" Safe="True" />
```

from the top site go to "Site Actions/Site Settings/Modify All Site Settings/Galleries/Web Parts"

4. use the "Upload" menu option to upload the AEFILTER.webpart file.

Automatic Installation

1. Unpack the **AEFilterWebpart.wsp** and **Install.bat** files from the Zip Archive and place the 2 files onto your Sharepoint Server.
2. Add the Solution by either running **Install.bat** (for Sharepoint 2007), **install2010.bat** for Sharepoint 2010) or by manually entering:
`stsadm -o addsolution -filename AEFILTERwebpart.wsp`
3. Deploy the solution by navigating with your browser to "Central Administration > System Settings > Farm Management > Manage farm solutions":

Microsoft SharePoint 2010 Central Administration ▶ System Settings

- Central Administration
- Application Management
- System Settings**
- Monitoring
- Backup and Restore
- Security
- Upgrade and Migration

- Servers**
Manage servers in this farm | Manage services on server
- E-Mail and Text Messages (SMS)**
Configure outgoing e-mail settings | Configure incoming e-mail settings | Configure mobile
- Farm Management**
Configure alternate access mappings | Manage farm features | **Manage farm solutions** | Manage user solutions | Configure privacy options | Configure cross-firewall access zone

4. You should now see the **AEFilterWebpart.wsp** in the farm's solution store:

Microsoft SharePoint 2010 Central Administration ▶ Solution Management
This page has a list of the Solutions in the farm.

Name	Status	Deployed To
aegooglemapwebpart.wsp	Not Deployed	None
aestaffdirectorywebpart.wsp	Deployed	http://
aefilterwebpart.wsp	Not Deployed	http://
aevevwebpart.wsp	Deployed	http://

Click on "AEFilterWebpart.wsp" to deploy the solution:

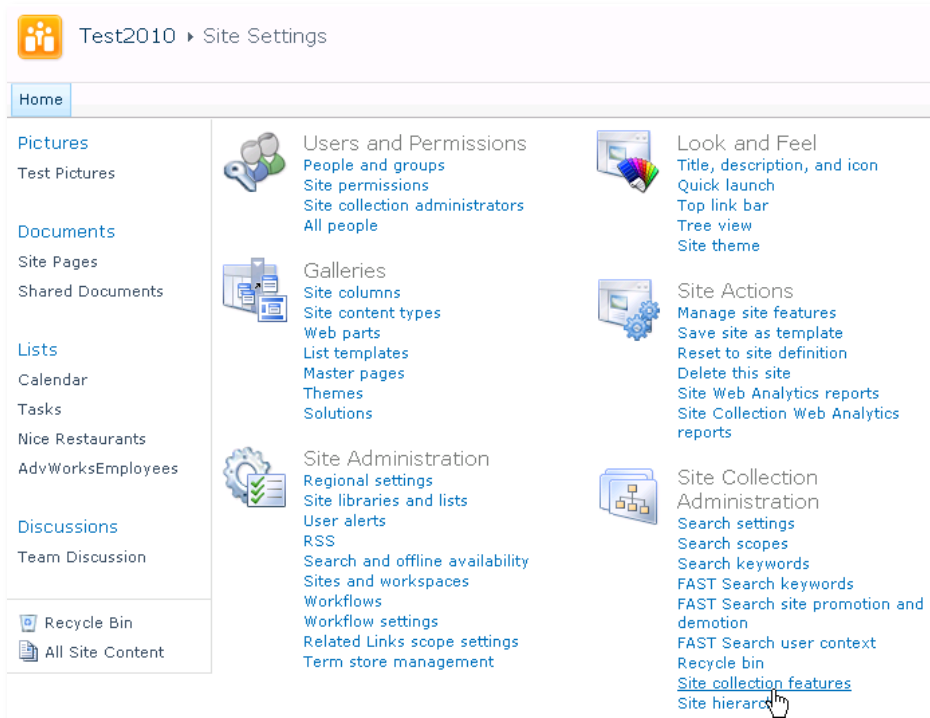
Microsoft SharePoint 2010 Central Administration ▶ Solution Properties

- Central Administration
- Application Management
- System Settings
- Monitoring
- Backup and Restore
- Security
- Upgrade and Migration
- General Application Settings

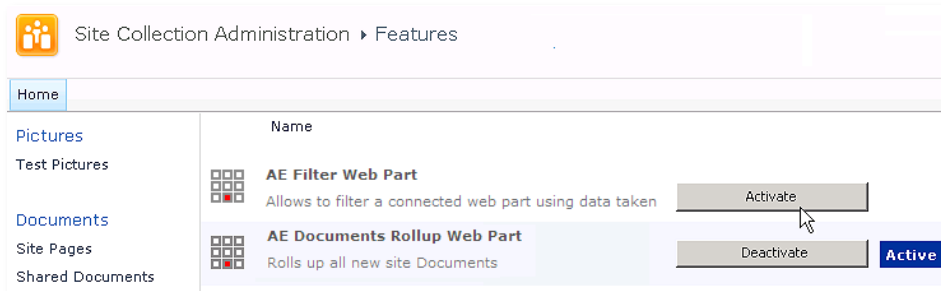
[Deploy Solution](#) [Remove Solution](#) [Back to Solutions](#)

Name:	aefilterwebpart.wsp
Type:	Core Solution
Contains Web Application Resource:	Yes
Contains Global Assembly:	Yes
Contains Code Access Security Policy:	No
Deployment Server Type:	Front-end Web server
Deployment Status:	Not Deployed
Deployed To:	None

5. Proceed to activate the feature by navigating to the "Site Actions/Site Settings" page in your top-level site:



Choose "Site collection features" to navigate to the Site Collection Features page:

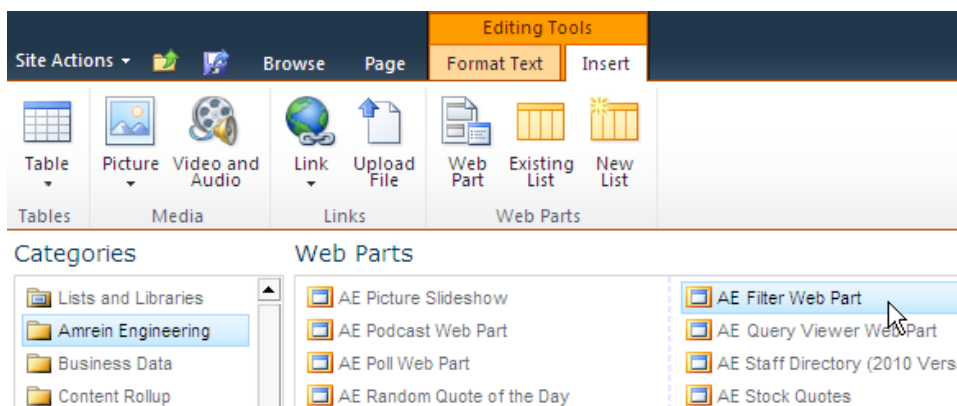


Activate the "AE Filter Web Part" feature

Adding the Web Part to a Page

Navigate to a page where you would like to place the web part and choose "Site Actions/Edit Page"

Add the web part to the appropriate zone. The web part is listed in the "Amrein Engineering" gallery section :



Web Part Configuration

Configure the following Web Part properties in the Web Part Editor "Miscellaneous" pane section as needed:

- **Filter Label:** enter the desired label for the filter
- **Filter Type:** select one of the available Filter types
 - Text Filter
 - Dropdown Filter
 - Date Filter
- **Default Value:** optionally enter a filter default value

Date or Text Filter:

- enter {today} to set it to the current date

Dropdown Filter:

you can either directly enter the dropdown values (separate each value by a semicolon).

Example:

;Completed;Not Started;In Progress;Deferred

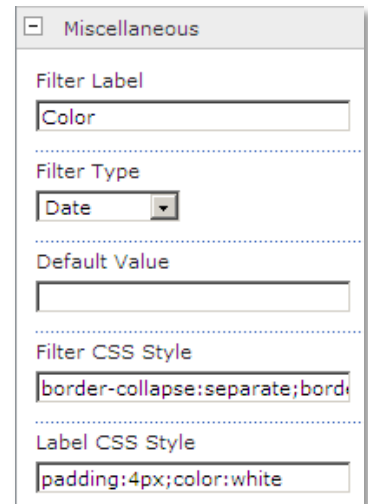
or dynamically get the values from a Sharepoint List. In this case please enter the List URL, optional List View, List Column name (filter value) and optional List Column name (displayed value) as follows:

<http://domain/site/Lists/Listname:ViewName|FilterColumn|DisplayColumn>

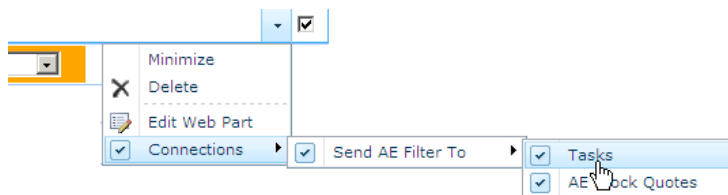
Example:

<http://spdomain.com/sites/Projects/Lists/Tasks|AssignedTo>

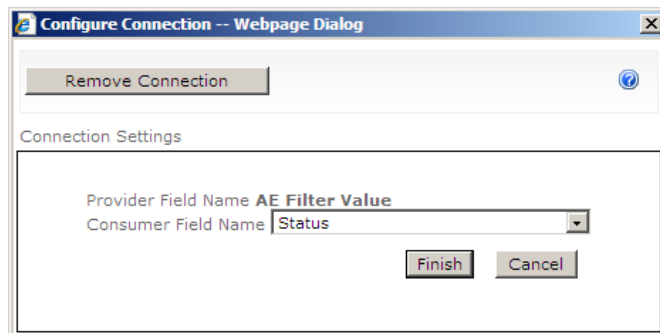
- **Filter CSS Style:** optionally enter the CSS style for the filter box
- **Label CSS Style:** optionally enter the CSS style for the filter label



After having configured the Filter Web Part, connect it to another web part placed on the same page by selecting "Edit Web Part" and then "Connections":



Select the web part to be connected to the filter and then select the List column to be filtered:



The web part is now ready to be used as a filter.