
Discussion Rollup Web Part

Sharepoint 2010 Installation Instructions

© AMREIN ENGINEERING AG

Version 1.0

April 2012

AE Discussion Rollup Web Part



Meaning of Life

Immortality is the ability to live forever, or put ... (read more)

Theresa Miller | Discussion | 30 hours ago | 3



Meaning of Life

The prospect of eternal life has it's pro's and it's con's..

John Webster | Discussion | 2 months ago | 3



Meaning of Life

Is there life after death ?

Theresa Miller | Discussion | 2 months ago | 3



SP2013 Discussion

When will it be released ?

Theresa Miller | Discussion Test | 2 months ago | 2



SP2013 Discussion

This is the place to discuss the upcoming SP 2013 product

John Webster | Discussion Test | 2 months ago | 2

Description

The Discussion Rollup Web Part displays the most recent discussion messages of each Discussion List within the Sharepoint Site collection and thus gives much better visibility to new discussion posts created anywhere within the current site collection.

The Web Part can be used with Windows Sharepoint Services V3, MOSS 2007 and Sharepoint 2010 (both Server and Foundation).

Prerequisites

Before you attempt to install the solutions you need to make sure that you have the following installed on your server(s):

- Windows SharePoint Services 3.0, Microsoft Office SharePoint Server 2007 or Sharepoint 2010

Installation

Manual Installation

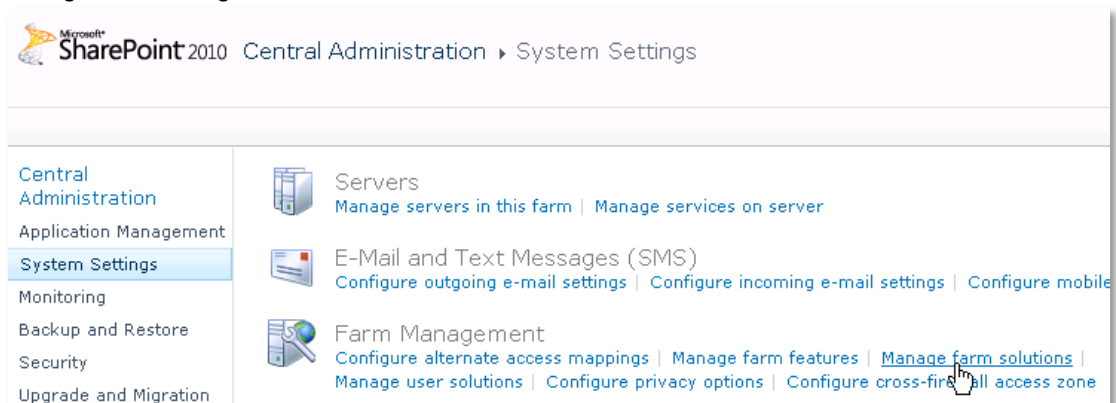
1. download and unpack the **AEDiscussionRollupWebpart.zip** file.
The ZIP archive contains the AEDiscussionRollupWebpart.dll and the AEDiscussionRollup.webpart files.
2. drop the AEDiscussionRollupWebpart.dll into the GAC of your Sharepoint server (c:\windows\assembly).
3. add the following line to the "<SafeControls>" section of your Web.Config file.
Please make sure that the line is added as one single line (no line breaks):

```
<SafeControl Assembly="AEDiscussionRollupWebpart, Version=1.0.0.0, Culture=neutral,
PublicKeyToken=43aac82daac15490" Namespace="AEDiscussionRollupWebpart" TypeName="*"
Safe="True" />
```

4. from the top site go to "Site Actions/Site Settings/Modify All Site Settings/Galleries/Web Parts"
5. use the "Upload" menu option to upload the AEDiscussionRollup.webpart file.

Automatic Installation

1. Unpack the **AEDiscussionRollupWebpart.wsp** and **Install2010.bat** (install.bat in case of SP 2007) files from the Zip Archive and place the 2 files onto your Sharepoint Server.
2. Add the Solution by either running **Install.bat** (WSS 3.0 or MOSS 2007) or **Install2010.bat** (Sharepoint 2010) or by manually entering:
`stsadm -o addsolution -filename AEDiscussionRollupwebpart.wsp`
3. Deploy the solution by navigating with your browser to "Central Administration > System Settings > Farm Management > Manage farm solutions":



4. You should now see the **AEDiscussionWebpart.wsp** in the farm's solution store:

Microsoft SharePoint 2010 Central Administration > Solution Management
This page has a list of the Solutions in the farm.

Name	Status	Deployed To
aegooglemapwebpart.wsp	Not Deployed	None
aestaffdirectorywebpart.wsp	Deployed	http://bto-web1-cd/
aesurveywebpart.wsp	Deployed	http://bto-web1-cd/
aediscussionrollupwebpart.wsp	Not Deployed	None

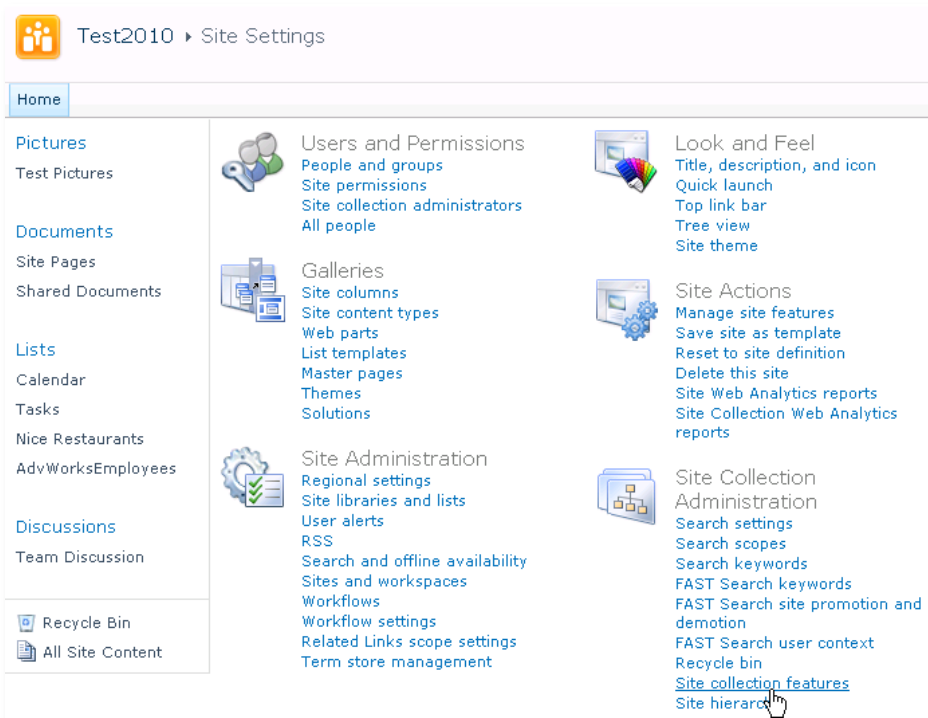
Click on "**AEDiscussionRollupwebpart.wsp**" to deploy the solution:

Microsoft SharePoint 2010 Central Administration > Solution Properties

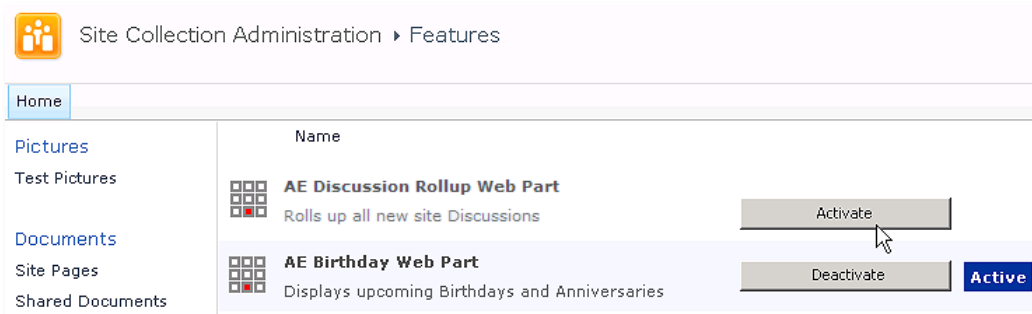
[Deploy Solution](#) [Remove Solution](#) [Back to Solutions](#)

Name:	aediscussionrollupwebpart.wsp
Type:	Core Solution
Contains Web Application Resource:	Yes
Contains Global Assembly:	Yes
Contains Code Access Security Policy:	No
Deployment Server Type:	Front-end Web server
Deployment Status:	Not Deployed
Deployed To:	None

5. Proceed to activate the feature by navigating to the "Site Actions/Site Settings" page in your top-level site:



Choose "Site collection features" to navigate to the Site Collection Features page:

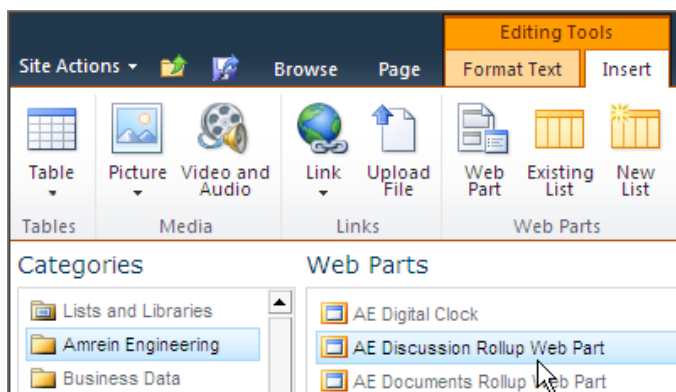


Activate the "AE Discussions Rollup Web Part" feature

Adding the Web Part to a Page

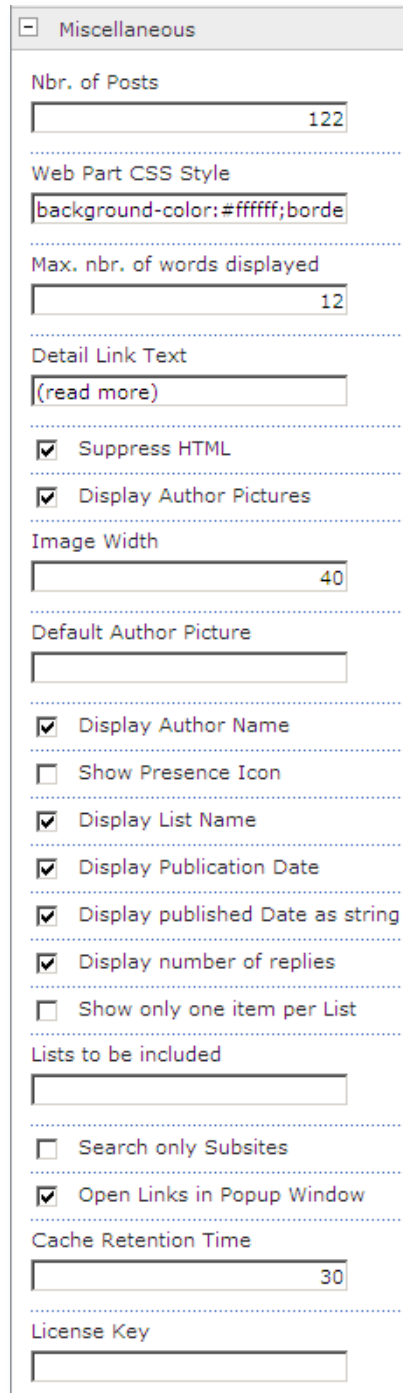
Navigate to a page where you would like to place the web part and choose "Site Actions/Edit Page"

- Add the web part to the appropriate zone. The web part is listed in the "Amrein Engineering" gallery section :



Web Part Configuration

Configure the following Web Part properties in the Web Part Editor "Miscellaneous" pane section as needed:



The image shows a screenshot of the 'Miscellaneous' pane in the Web Part Editor. The pane is titled 'Miscellaneous' and contains the following configuration options:

- Nbr. of Posts:** A text box containing the value '122'.
- Web Part CSS Style:** A text box containing the value 'background-color:#ffffff;borde'.
- Max. nbr. of words displayed:** A text box containing the value '12'.
- Detail Link Text:** A text box containing the value '(read more)'.
- Suppress HTML:** A checked checkbox.
- Display Author Pictures:** A checked checkbox.
- Image Width:** A text box containing the value '40'.
- Default Author Picture:** An empty text box.
- Display Author Name:** A checked checkbox.
- Show Presence Icon:** An unchecked checkbox.
- Display List Name:** A checked checkbox.
- Display Publication Date:** A checked checkbox.
- Display published Date as string:** A checked checkbox.
- Display number of replies:** A checked checkbox.
- Show only one item per List:** An unchecked checkbox.
- Lists to be included:** An empty text box.
- Search only Subsites:** An unchecked checkbox.
- Open Links in Popup Window:** A checked checkbox.
- Cache Retention Time:** A text box containing the value '30'.
- License Key:** An empty text box.

Please see the "Discussion Document Rollup" web site at <http://www.amrein.com/apps/page.asp?Q=5824> for a detailed description of each web part setting.

License Activation

You have the following 3 options to enter your License Key:

1. Enter the License Key into the corresponding “**License Key**” field in the web part configuration pane (see Description above).
2. **WSP Solution Deployment:**
Add the **License.txt** file (as supplied by AMREIN ENGINEERING after having purchased a license) to the Solution at the following location:

```
c:\Program Files\Common Files\Microsoft Shared\Web Server  
Extensions\14\template\features\AEDiscussionRollupWebpart
```

3. **Manual Deployment:**
Add the License Key to your web.config (typically found at c:\inetpub\wwwroot\wss\virtualdirectories\80) **<appSettings>** section as follows:

```
<appSettings>  
  <add key="AEDU" value="AEDU-x-xxxx-xxxx-xx-xx" />  
</appSettings>
```

Replace the “x” characters with your actual key values.

Please note that this method requires you to manually add the key to each Sharepoint application.