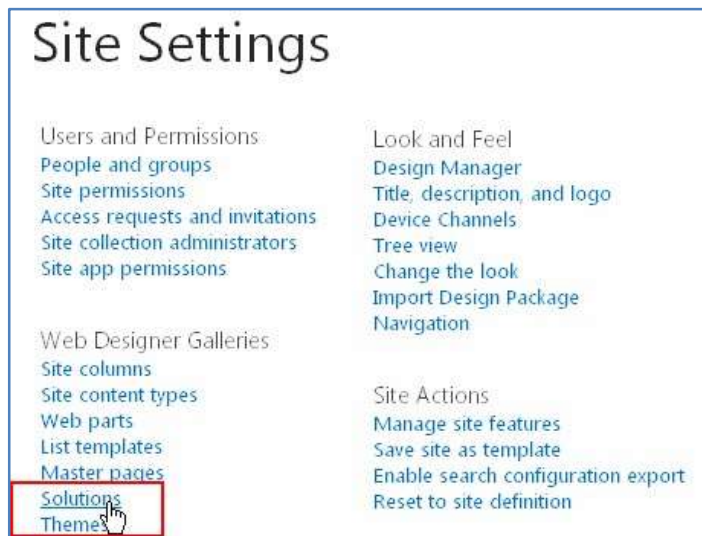


Digital Clock Web Part Installation Instructions for SharePoint Online/Office365

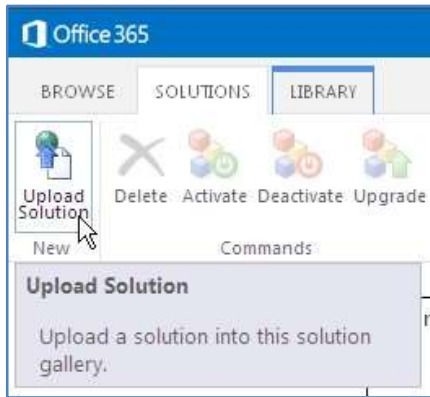
AE Digital Clock Web Part



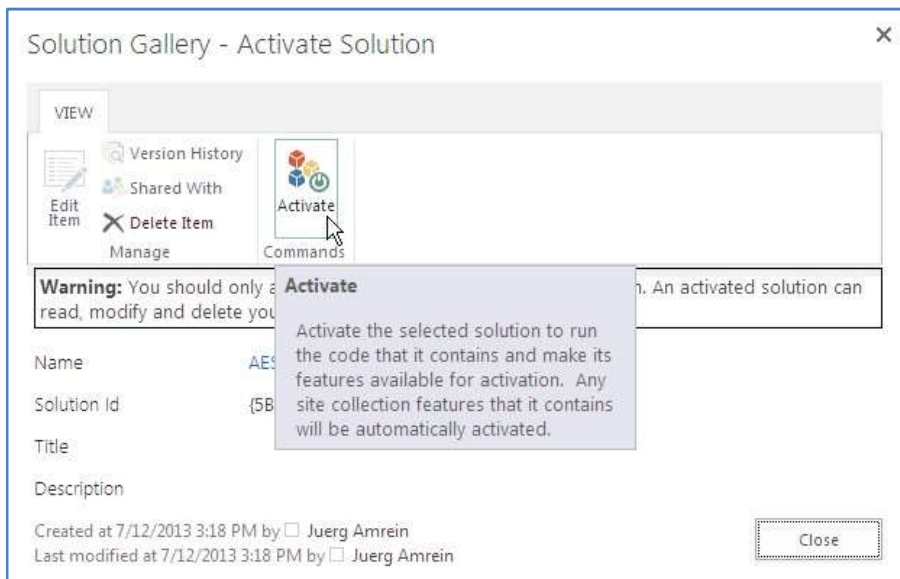
- Download the “**Digital Clock Web Part for Office365**” zip file from our website at <http://www.amrein.com/apps/page.asp?Q=5729>
- Extract the **AEDigitalClockWebpart365.wsp** file
- If you previously installed an older version, then navigate to “Site settings/Web Designer Galleries/Web parts” and delete the below file:
AEDigitalClock.webpart



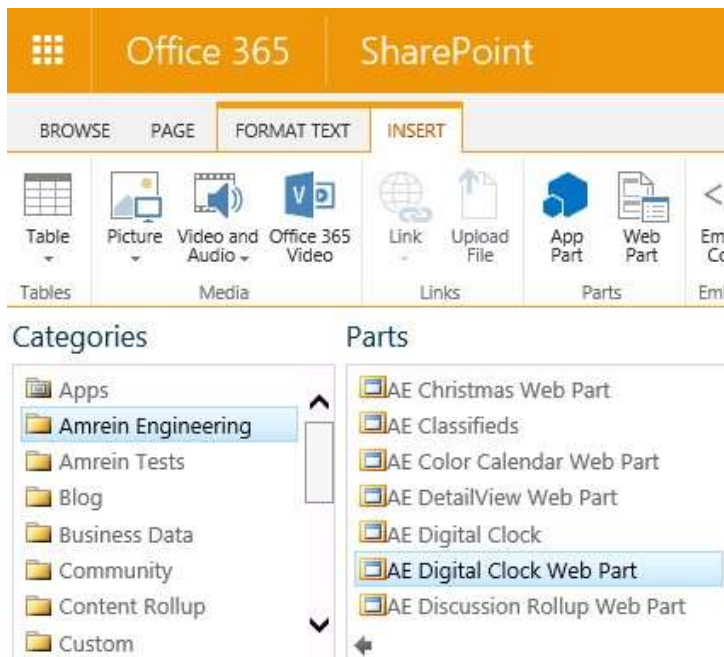
- If you previously installed an older version, then navigate to “Site settings/Web Designer Galleries/Solutions”, deactivate the **AESBDigitalClockWebpart** solution and then delete the solution
- Upload the **AEDigitalClockWebpart365.wsp** solution file



- activate the solution:



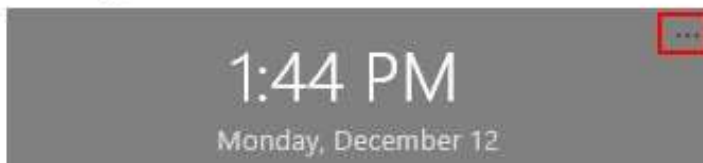
- You now can insert the “AE Digital Clock Web Part” (“Amrein Engineering” web part gallery category) into a page:



- save the page and configure it by clicking the ellipses to open the configuration dialog:

- If you are using a Publishing Site, please do the following steps (also later to change your configuration):
 - Edit the Page
 - Set the WebPart to a WebPart zone
 - Save the Page
 - Redirect to the current URL by clicking into the URL section in your Browser and hit “Enter”
 - Click on the Ellipses to get it configured
 - Click save and close the dialog (is not self-closing by using the save button)
 - Check-in the page and publish
- On a WebPart/ Wiki Page, please do the following steps:
 - Edit the Page
 - Set the WebPart to a WebPart zone
 - Save the Page
 - Hit “F5” to refresh the Page, or Redirect to the current URL by clicking into the URL section in your Browser and hit “Enter”
 - Click on the Ellipses to get it configured
 - Click save and close the dialog (is not self-closing by using the save button)

AE Digital Clock Web Part



- configure the settings as needed and confirm by clicking the “**Save**” button:

Settings



Amrein Engineering Digital Clock

Show Local Clock'

Show Local Date'

World Clock Locations:

```
<div class='AEDCTitle'> <b>Santa Cruz (SC) <b>  
</div>|America/Argentina/Rio_Gallegos;  
<div class='AEDCverticalLine'> </div> <div
```

Show Date'

WorldClock Date Format:

Width:

Background Color:

World Clock Background Color:

CSS Style:

```
.ms-webpart-titleText{  
  text-align: center !important;  
  color: orange !important;
```

Options:

```
manualwidth|
```

Save

World Clock Locations:

Enter the time zone name as described in the below document:

https://en.wikipedia.org/wiki/List_of_tz_database_time_zones

Width:

leave empty to let the web part use the available zone width or enter a numeric value (in pixels)