

Color Calendar

Web Part

© AMREIN ENGINEERING AG

Version 1.0

November 2010

AE Color Calendar Web Part

November 2010						
Sun	Mon	Tue	Wed	Thu	Fri	Sat
31	1 5:00p First of November	2 8:00a MOSS Workshop	3	4	5 9:00a Staff Meeting 6:00p Gig Smiley's	6 All day Jazz Festival 9:00a Continental Breakfast
7 All day Jazz Festival 11:00a Taco Lunch	8 All day Jazz Festival 1:00p Team Lunch	9	10 1:00p Team Lunch	11 All day Veterans' Day	12 1:00p Team Lunch 7:00p Gig Bluesband	13
14 1:00p Team Lunch	15	16 1:00p Team Lunch	17	18 1:00p Team Lunch	19	20 1:00p Team Lunch
21	22 1:00p Team Lunch	23	24 1:00p Team Lunch	25 All day Thanksgivir Day	26	27
28	29	30 9:00a Last Day of the month	1	2	3	4

Description

The Color Calendar displays the color-code appointments of a Sharepoint Calendar. The web part size can be freely configured so it can be used as a "mini" calendar.

The Web Part can be used with Windows Sharepoint Services V3, MOSS 2007 and Sharepoint 2010.

The following parameters can be configured:

- The Sharepoint Calendar to be displayed
- The web part size and colors
- The amount of detail information to be displayed

Prerequisites

Before you attempt to install the solutions you need to make sure that you have the following installed on your server(s):

- Windows SharePoint Services 3.0, Microsoft Office SharePoint Server 2007 or Sharepoint 2010

Installation

Manual Installation

1. download and unpack the **AIColorCalendarWebpart.zip** file.
The ZIP archive contains the AIColorCalendarWebpart.dll and the AIColorCalendar.webpart files.
2. drop the **AIColorCalendarWebpart.dll** either into the SPS web application bin directory or into the GAC of your Sharepoint server (c:\windows\assembly).
3. add the following line to the "<SafeControls>" section of your Web.Config file.
Please make sure that the line is added as one single line (no line breaks):

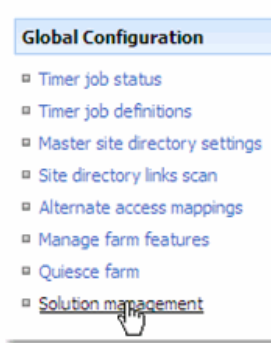
```
<SafeControl Assembly="AIColorCalendarWebpart, Version=1.0.0.0, Culture=neutral,
PublicKeyToken=d0196ea0f653287c" Namespace="AIColorCalendarWebpart" TypeName="*" Safe="True" />
```

4. from the top site go to "Site Actions/Site Settings/Modify All Site Settings/Galleries/Web Parts"
5. use the "Upload" menu option to upload the AIColorCalendar.webpart file.

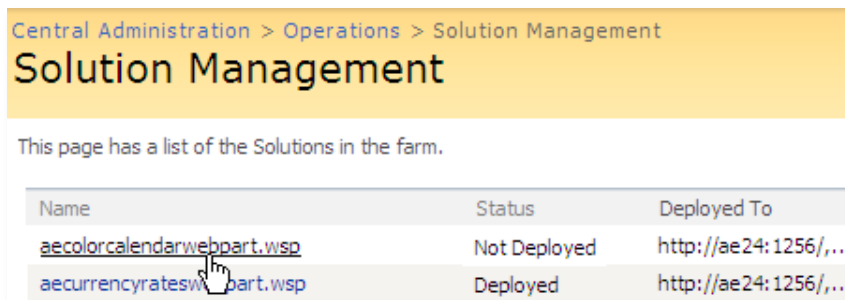
Automatic Installation

1. Unpack the **AIColorCalendarWebpart.wsp** and **Install.bat** files from the Zip Archive and place the 2 files onto your Sharepoint Server.
2. Add the Solution by either running **Install.bat** (WSS 3.0 or MOSS 2007) or **Install2010.bat** (Sharepoint 2010) or by manually entering:
`stsadm -o addsolution -filename AIColorCalendarWebpart.wsp`

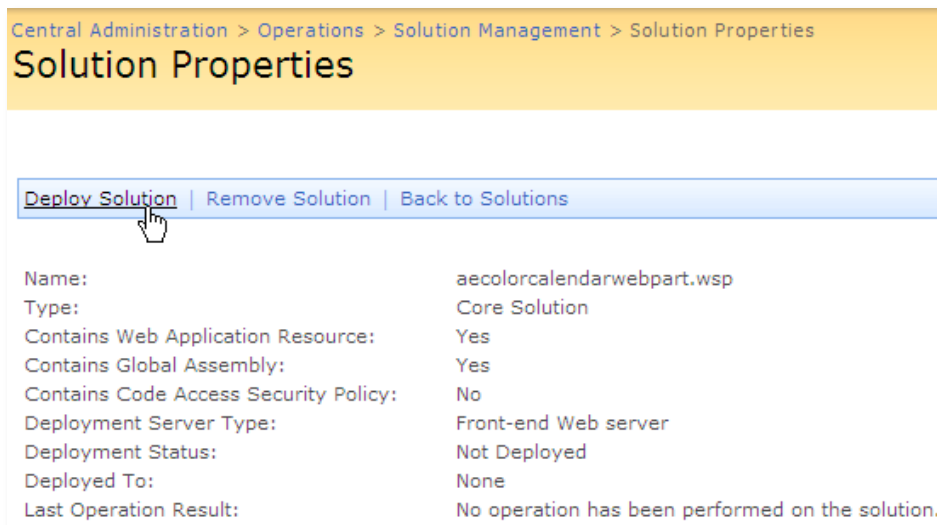
3. Deploy the solution by navigating with your browser to “Central Administration->Operations->Solution Management”:



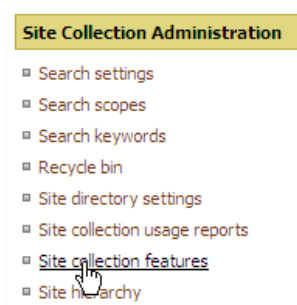
4. You should now see the **AECOLORCALENDARWEBPART.WSP** in the farm’s solution store:



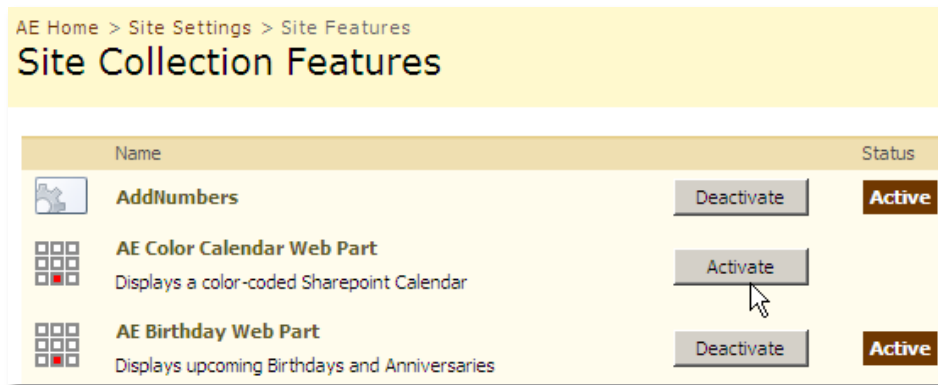
Click on “AECOLORCALENDARWEBPART.WSP” to deploy the solution:



5. Proceed to activate the feature by navigating to the “Site Actions/Site Settings” page in your top-level site:



Choose "Site collection features" to navigate to the Site Collection Features page:

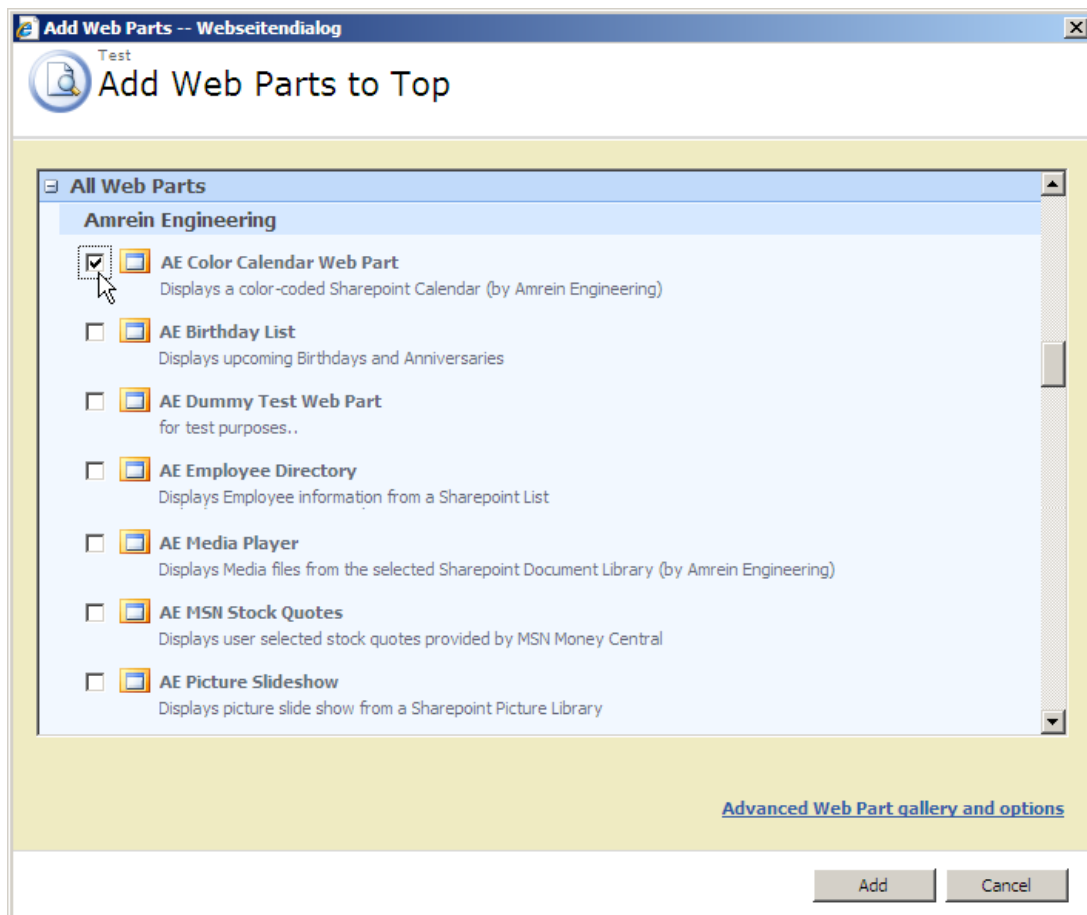


Activate the "AE Blog Rollup Web Part" feature

Adding the Web Part to a Page

Navigate to a page where you would like to place the web part and choose "Site Actions/Edit Page"

Add the web part to the appropriate zone. The web part is listed in the "Amrein Engineering" gallery section :



License Activation

You have the following 3 options to enter your License Key:

1. Enter the License Key into the corresponding “**License Key**” field in the web part configuration pane (see Description above).
2. **WSP Solution Deployment:**
Add the **License.txt** file (as supplied by AMREIN ENGINEERING after having purchased a license) to the Solution at the following location:

```
c:\Program Files\Common Files\Microsoft Shared\Web Server  
Extensions\12\template\features\AECalendarWebpart
```

3. **Manual Deployment:**
Add the License Key to your web.config (typically found at c:\inetpub\wwwroot\wss\virtualdirectories\80) **<appSettings>** section as follows:

```
<appSettings>  
  <add key="AECC" value="AECC-x-xxxxx-xxxxx-xx-xx" />  
</appSettings>
```

Replace the “x” characters with your actual key values.

Please note that this method requires you to manually add the key to each Sharepoint application.